



GMT MONTHLY MEMBERSHIP PROGRESS REPORT

Results as of: 6/30/2018

Multiple District 13

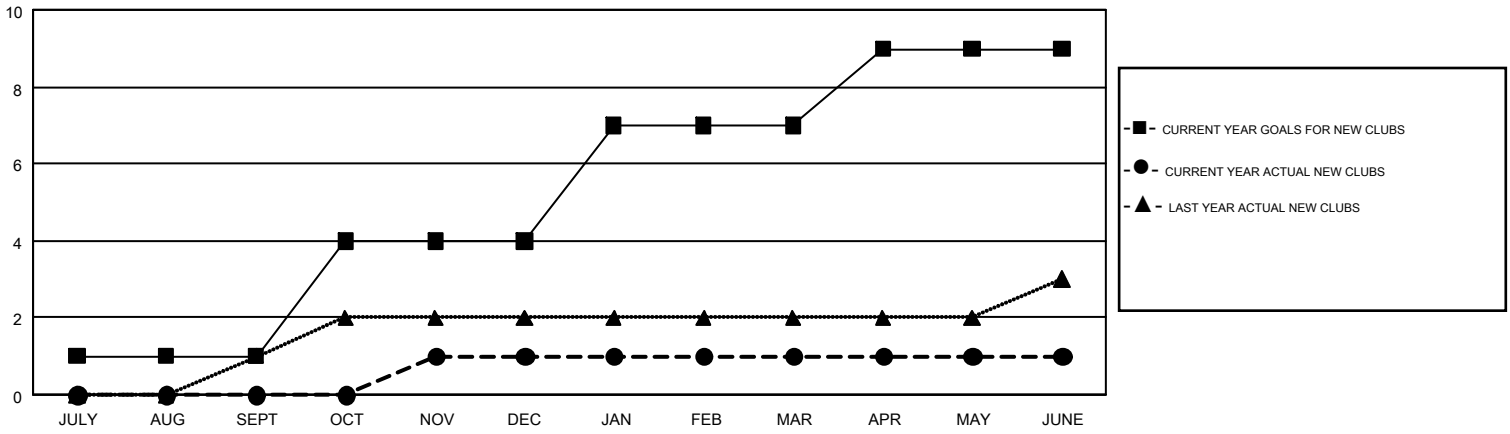
LOCATION: OHIO

GMT: CINDY GREGG

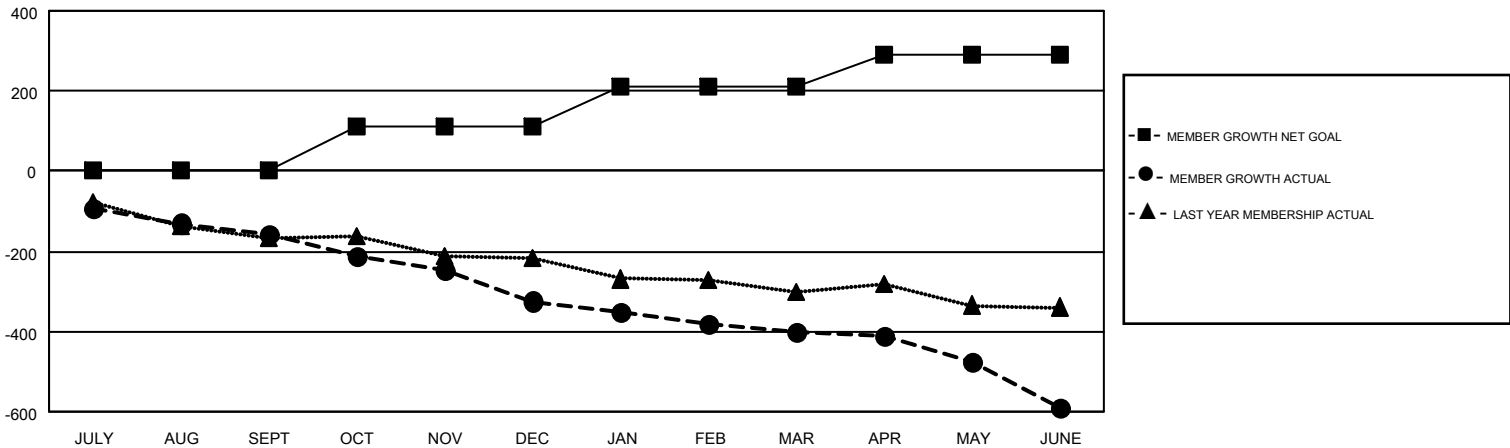
GMT CA 1

Clubs				Members			
RESULTS FOR 2017-2018				RESULTS FOR 2017-2018			
QUARTER	NEW CLUB GOAL	NEW CLUBS	DROPPED CLUBS	QUARTER	MEMBER GROWTH NET GOAL	MEMBER GROWTH ACTUAL	DROPPED MEMBERS ACTUAL (including transfers)
JULY/AUG/SEPT	1	0	0	JULY/AUG/SEPT	4	180	313
OCT/NOV/DEC	3	1	4	OCT/NOV/DEC	106	238	373
JAN/FEB/MAR	3	0	2	JAN/FEB/MAR	103	200	264
APR/MAY/JUNE	2	0	5	APR/MAY/JUNE	79	367	512

GOALS AND ACTUAL NEW CLUBS CUMULATIVE



GOALS AND ACTUAL MEMBERS CUMULATIVE



DROPPED CLUBS: 11	264 CLUBS OF 414 ADDED 1 OR MORE NEW MEMBERS	<u>GENDER DISTRIBUTION</u>	
<u>DROPPED MEMBERS</u>		MALE	8,246 (72.18%)
DECEASED	215	FEMALE	3,178 (27.82%)
CLUB CANCELLED	90	TOTAL FAMILY UNIT MEMBERS	
OTHER	1,157	FAMILY MEMBERS PAYING HALF DUES	
TOTAL	1,462	TOTAL FAMILY UNIT MEMBERS	
		FAMILY MEMBERS PAYING HALF DUES	

[CLICK HERE FOR CUMULATIVE MEMBERSHIP DATA](#)

TOTAL FAMILY UNIT MEMBERS	0
FAMILY MEMBERS PAYING HALF DUES	0